



# SmilartOS

UserGuide v1576.4.0

# Table of Contents

Overview.....	1
Hardware requirements.....	1
Installation process.....	1
Prepare boot stick.....	1
Installation.....	1
Installation. First stage.....	2
Installation. Second stage.....	6
Collecting data for a license.....	12
License acquisition.....	13
License installation.....	14
Product installation.....	15

# Overview

SmilartOS is a Linux operating system based on CoreOS (<https://www.coreos.com/>). There are differences between SmilartOS and CoreOS:

- OS installation process
- OS upgrade process
- Default settings
- Set of utils
- SAM

You can use official CoreOS documentation to configure anything in operating system. SmilartOS doesn't change any binary files in base CoreOS distribution. So SmilartOS is 100% compatible with CoreOS. This documentation describes differences between SmilartOS and CoreOS. You should use official CoreOS documentation for other questions.

## Hardware requirements

SmilartOS has only one special requirement: at least 8 GB of RAM.

Other hardware requirements are the same as for CoreOS.



Installer always uses disk `/dev/sda` as a target disk for operating system. It can't be changed. If you have several disks and not sure which is `/dev/sda`, disconnect all other disks except for one that will be used in operating system installation process. You can return other disks after installation completed.

## Installation process

### Prepare boot stick

Write iso image to USB stick. Image must be written exactly byte to byte. To do so you can use **Win32 Disk Imager** in Windows, **Image writer** in Linux or **dd** util in any linux/unix distribution.



You cannot install SmilartOS from DVD disk.

## Installation

First of all, you should boot from USB stick.

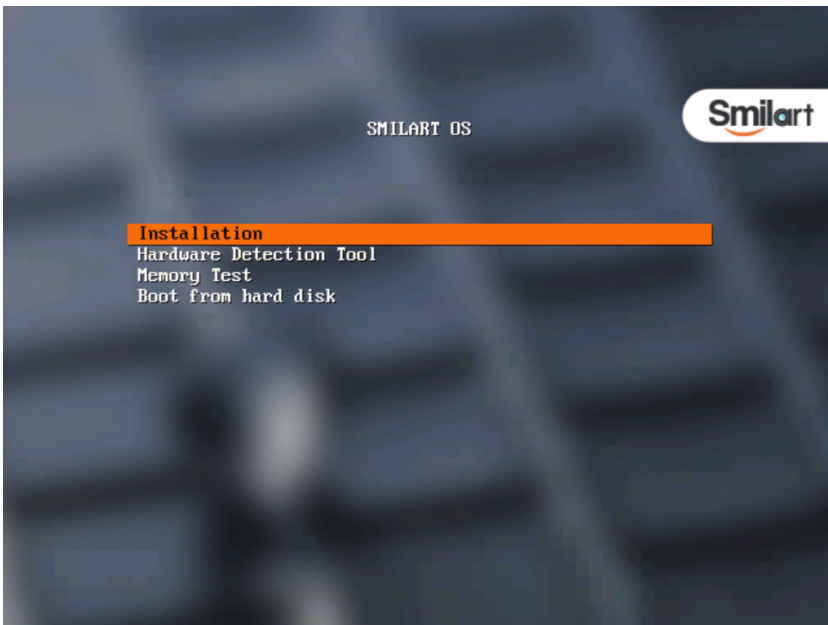
- Insert USB that contains the image in the computer and power it on.
- Select USB stick as a boot device.
- Boot the computer from USB stick.

When your computer is booted from USB stick, you will see a boot menu which consist of four items (Image 3):

- *Installation* – start the installation process.
- *Hardware Detection Tool* – utils to check hardware.
- *Memory Test* – test RAM with *memtest86+*
- *Boot from hard disk* – boot the computer from hard disk.

To start installation choose *Installation* item in the menu.

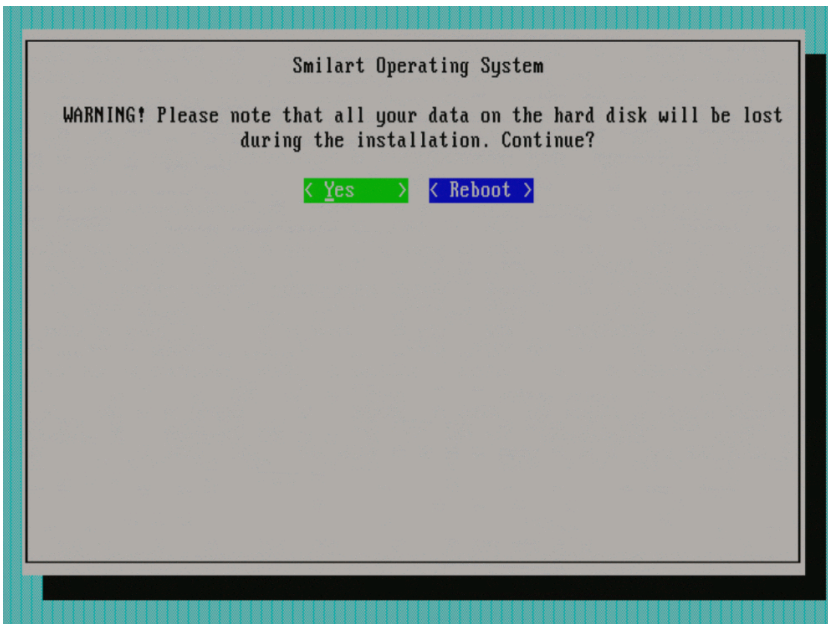
## Installation. First stage.



Picture 1.Boot menu

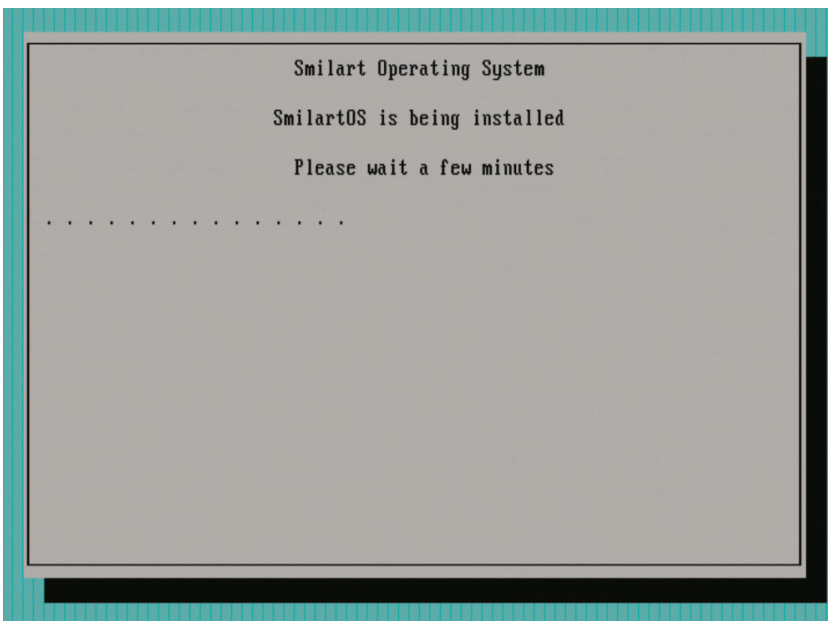
Installer verifies check sums of the installing components and warns you that all data on your local drive will be lost. [\(Picture 2\)](#).

To continue installation process choose **Yes** or choose **Reboot** to cancel installation.



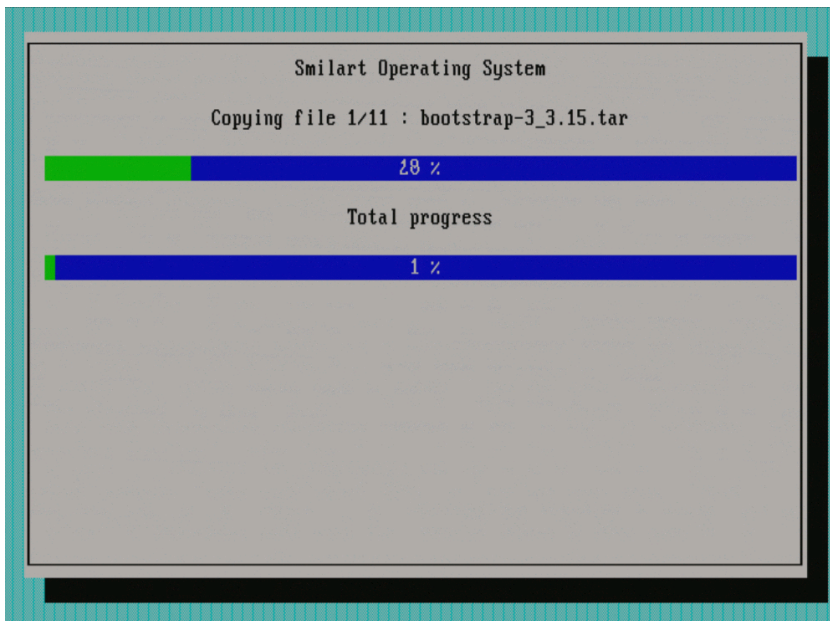
*\_Picture 2. \_Warning that all your data will be lost.*

Installation of CoreOS image takes a few minutes [\(Picture 3\)](#).



*\_Picture 3. Installation in progress \_*

Necessary files will be copied without any questions.



Picture 4. Copying files

When all necessary files have been copied, press **Reboot** to reboot the server. Otherwise reboot will be done in automatic mode (*Picture 5*).



*Picture 5. First stage reboot*

## Installation. Second stage.

Remove USB stick from the server and boot it from you hard drive.

To log into system use the following credentials:

**Username:** root

**Passowrd:** smilart

```
This is localhost (Linux x86_64 3.18.6) 07:34:24
SSH host key: 69:40:0d:05:78:ed:6f:32:9a:af:bf:d6:b6:59:53:68 (DSA)
SSH host key: f0:1c:65:a2:98:91:65:73:a0:8d:72:20:10:13:9e:f1 (ED25519)
SSH host key: 95:eb:53:b9:4a:dc:a1:96:0f:e8:57:26:5a:c2:a3:53 (RSA)
enp5s0:

localhost login: [ 10.9579581 r8169 0000:05:00:00 enp5s0: link up
[ 10.9581311 IPv6: ADDRCONF(NETDEV_CHANGE): enp5s0: link becomes ready

This is localhost (Linux x86_64 3.18.6) 07:34:27
SSH host key: 69:40:0d:05:78:ed:6f:32:9a:af:bf:d6:b6:59:53:68 (DSA)
SSH host key: f0:1c:65:a2:98:91:65:73:a0:8d:72:20:10:13:9e:f1 (ED25519)
SSH host key: 95:eb:53:b9:4a:dc:a1:96:0f:e8:57:26:5a:c2:a3:53 (RSA)
enp5s0: fe80::1e6f:65ff:fe3e:e2a5

localhost login: smilart
Password: _
```

Picture 6. Log on



Next step is network configuration. Choose network interface card to configure (*Picture 7*). Use arrow up/down keys to move between items. Press **Space** to select. Press **Next** to configure chosen interface.



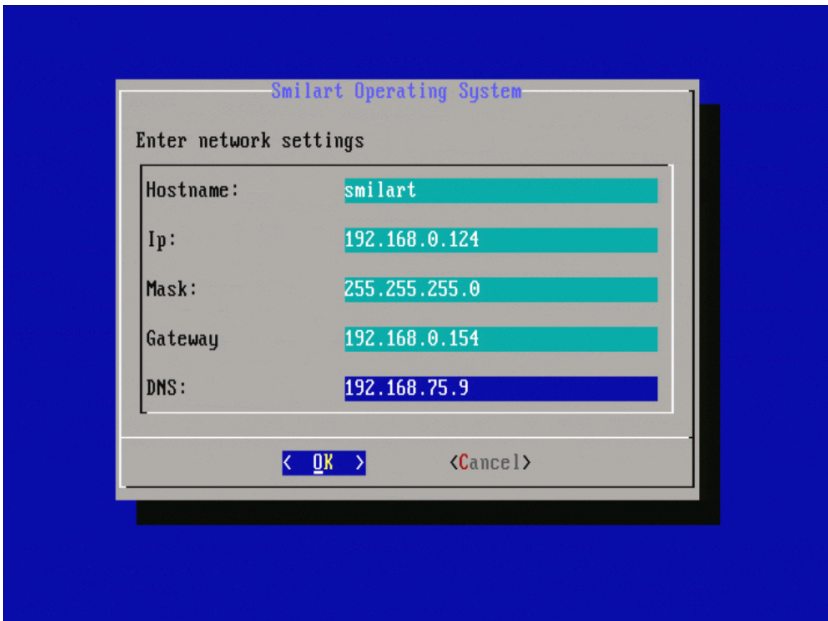
*Picture 7. Select network interface card*

Type following data in the opened windows (*Picture 8*):

1. Hostname.
2. Static IP-address.
3. Mask subnet.
4. Default gateway.
5. DNS server address.



Allowed symbols for hostname are latin alphabet, digits and dash.



Picture 8. Network settings



You can use `network-config` if you want to change network settings after installation.



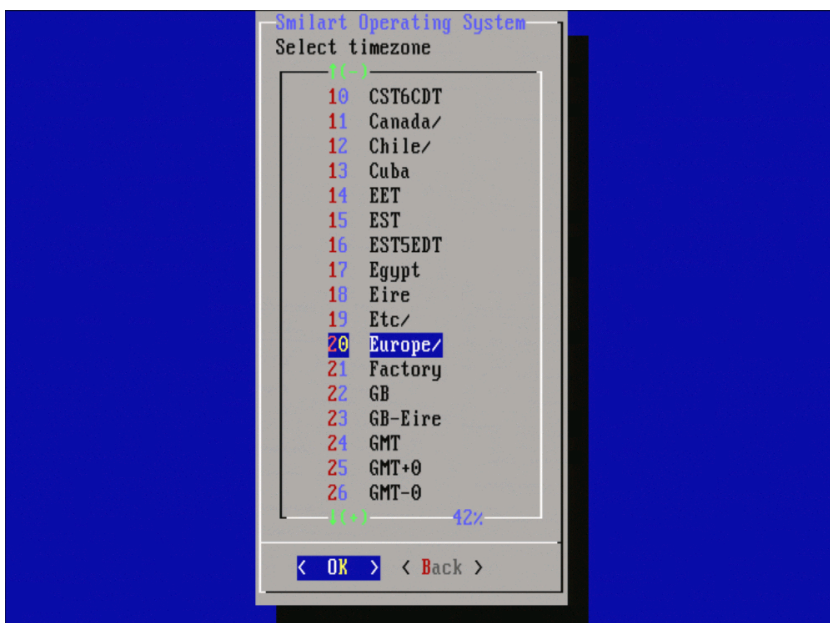
You cannot change **hostname** through this util after installation

Next step is date-time settings (*Pictures 9 - 12*).

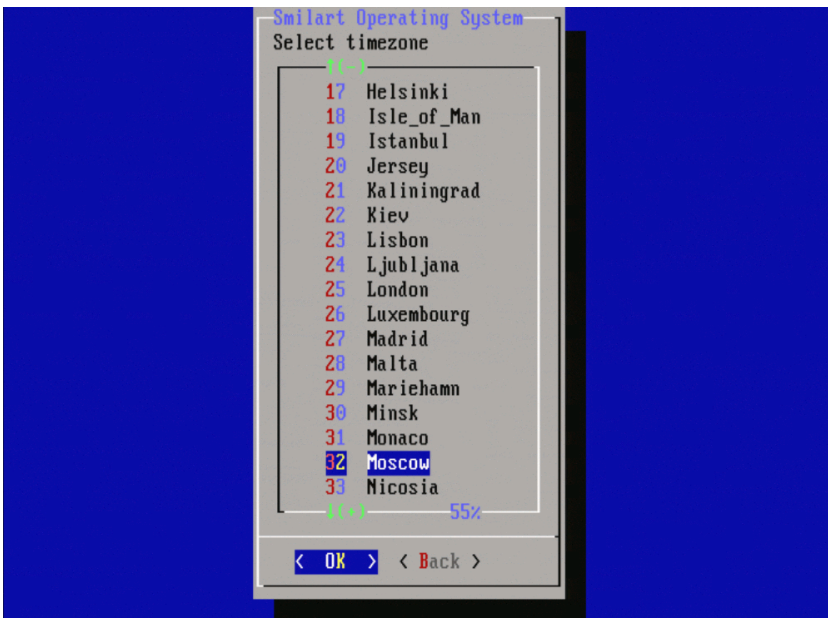


Picture 9. Date-time settings

To choose timezone, highlight *timezone* string and press **Change** button (*Picture 9*). .



Picture 10. Select timezone



Picture 11. Select timezone 2

Last step is installation of applications, which is on your USB stick. It's non-interactive process.



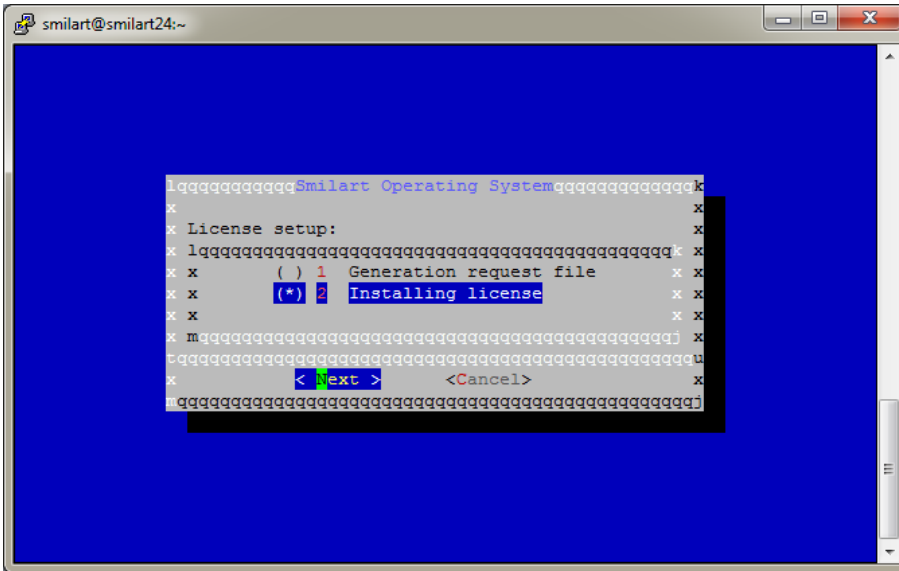


# License installation

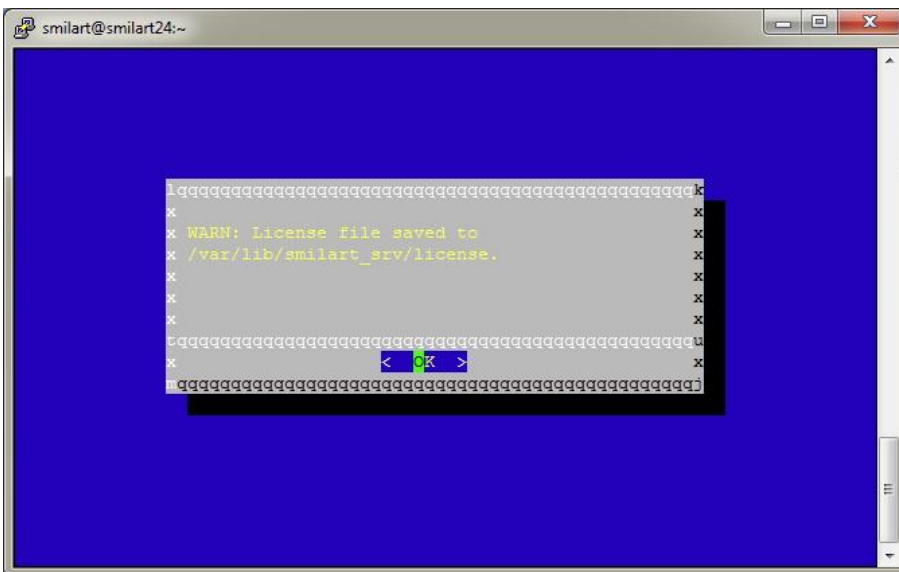
After inserting flash drive to the server run **license-config** (Picture 12).

Then choose **Installing license** and then press **Next** (Picture 15).

If everything is ok you'll get a message about succesfull license installation to `/var/lib/smilar_t_srv/license` (picture 16). Press **OK**.



Picture 15. License installation



picture 16. License key saved successfully



## Product installation

To get instructions on how to install a product, see documentation for the chosen product.